



MONTHLY SUMMARY OF STATISTICS

VICTORIA

EMBARGO: 11:30AM (CANBERRA TIME) TUES 17 APR 2001

CONTENTS

	<i>page</i>
Notes	2
Selected features	3
TABLES	
List of tables.....	4
Demography.....	5
Labour.....	6
Wages.....	9
Prices.....	9
Meat production.....	10
Building.....	11
Finance.....	14
Retail.....	15
Trade.....	16
Tourism.....	18

- For further information about these and related statistics, contact the National Information Service on 1300 135 070, or James Darragh on Melbourne 03 9615 7476.

NOTES

FORTHCOMING ISSUES

<i>ISSUE</i>	<i>RELEASE DATE</i>
April 2001	22 May 2001
May 2001	19 June 2001
June 2001	24 July 2001
July 2001	21 August 2001
August 2001	18 September 2001
September 2001	23 October 2001

SEASONAL ADJUSTMENT

Seasonal adjustment is a means of removing the estimated effects of normal seasonal variations from economic time series so that the effects of other influences are obvious. Seasonal variations are the systematic (though not necessarily regular) intra-year movements of economic time series. These are often the result of non-economic phenomena, such as climatic changes and regular religious festivals, e.g. Christmas and Easter.

TREND ESTIMATE

Smoothing seasonally adjusted series produces a measure of trend by removing the impact of the irregular component of the series. The trend estimates are derived by applying a 13-term Henderson weighted moving average to the respective seasonally adjusted series. Readers are reminded that trend estimates are subject to revision as subsequent months' data become available.

CHANGES IN THIS ISSUE

There are no changes in this issue.

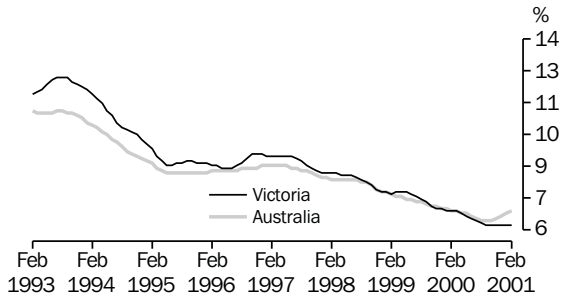
SYMBOLS AND OTHER USAGES

n.a.	not available
n.e.c.	not elsewhere classified
n.p.	not available for publication but included in totals where applicable
n.y.a.	not yet available
p	preliminary — figure or series subject to revision
r	figure or series revised since previous issue
*	estimate has a relative standard error greater than 25% and is therefore subject to sampling variability too high for most practical uses
. .	not applicable
—	nil or rounded to zero (including null cells)

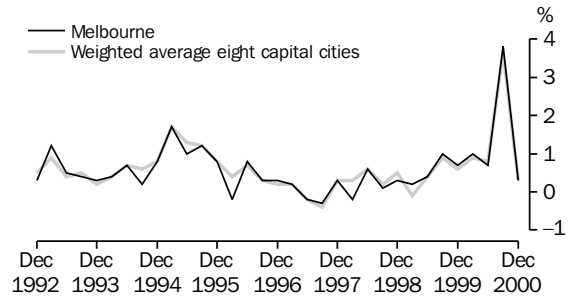
Zia ABBASI,
Regional Director, Victoria

SELECTED FEATURES

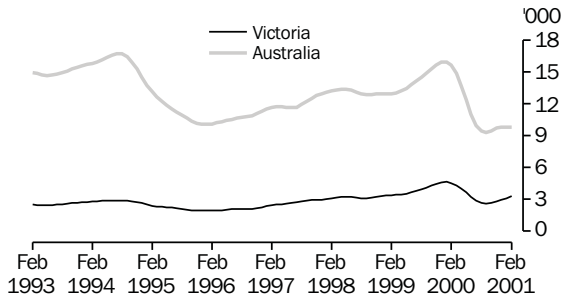
UNEMPLOYMENT RATE, Trend—Monthly



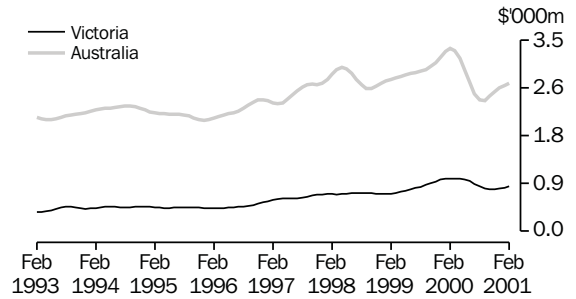
CONSUMER PRICE INDEX, Change from previous quarter



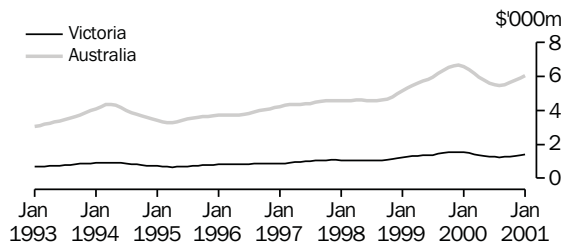
NEW DWELLING UNITS APPROVED, Trend — Monthly



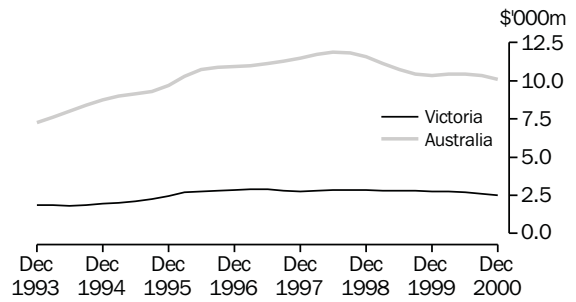
VALUE OF ALL BUILDINGS APPROVED, Trend — Monthly



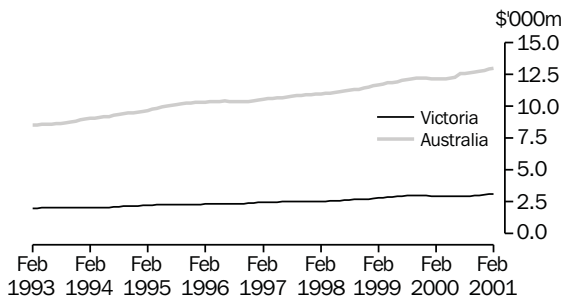
TOTAL VALUE OF SECURED HOUSING FINANCE COMMITMENTS TO INDIVIDUALS, Trend — Monthly



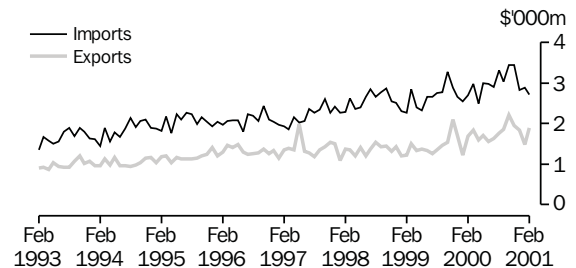
PRIVATE NEW CAPITAL EXPENDITURE, Trend — Quarterly



RETAIL TURNOVER, Trend — Monthly



MERCHANDISE IMPORTS AND EXPORTS, Original — Monthly



LIST OF TABLES

			Page
DEMOGRAPHY	1	Estimated resident population	5
	2	Births, deaths, marriages and divorces	5
LABOUR	3	Labour force status of the civilian population aged 15 years and over	6
	4	Employed persons, by industry	7
	5	Job vacancies	8
	6	Industrial disputes causing stoppage of work	8
	7	Average weekly earnings of employees	9
	8	Consumer price index — Melbourne	9
	9	Price index of materials used in building — Melbourne	10
MEAT PRODUCTION	10	Livestock slaughterings	10
	11	Meat production	11
BUILDING	12	New houses and other residential buildings, number of dwelling units	11
	13	Building approvals — Melbourne and Victoria	12
	14	Value of building	13
FINANCE	15	Private new capital expenditure, by selected industries and type of asset	14
	16	Commercial finance commitments	14
	17	Secured housing finance commitments, dwelling units	15
RETAIL	18	Retail turnover, by industry (excluding motor vehicles, parts, petrol, etc.)	15
TRADE	19	Exports and imports, by sections of the Australian export and import classifications	16
	20	Overseas trade, major trading partners	17
	21	Value of overseas trade — Victoria and Australia	18
TOURISM	22	Tourist accommodation	18

1

ESTIMATED RESIDENT POPULATION

Period	At end of period			Increase during period		Melbourne Statistical Division at 30 June(a)
	Males	Females	Persons	Natural	Total	
	'000	'000	'000	'000	'000	'000
1997-1998	2 301.0	2 353.9	4 654.9	27.7	49.7	3 367.0
1998-1999	2 328.1	2 379.5	4 707.6	27.1	52.7	3 413.9
1999-2000 p	2 358.9	2 407.0	4 765.9	26.8	58.3	3 466.0
1998						
September qtr	2 308.4	2 360.6	4 669.0	6.2	14.1	..
December qtr	2 315.6	2 368.5	4 684.1	6.8	15.1	..
1999						
March qtr	2 322.7	2 374.5	4 697.2	7.7	13.1	..
June qtr	2 328.1	2 379.5	4 707.6	6.4	10.4	..
September qtr p	2 336.0	2 386.2	4 722.2	6.2	14.6	..
December qtr p	2 343.2	2 393.5	4 736.7	6.3	14.5	..
2000						
March qtr p	2 352.3	2 401.4	4 753.7	7.2	17.0	..
June qtr p	2 358.9	2 407.0	4 765.9	7.0	12.2	..
September qtr p (b)	n.y.a.	n.y.a.	n.y.a.	6.2	n.y.a.	..

(a) Based on the 1998 Statistical Division boundaries.

(b) Overseas migration data for September quarter 2000 and, as a consequence, estimates of the resident population (ERP) at 30 September 2000 are not yet available. Further information is available in September quarter 2000, *Australian Demographic Statistics* (Cat. no 3101.0) and Demography Working Paper 2001/1 — Estimating July to December 2000 Net Overseas Migration, available on the ABS website <http://www.abs.gov.au>. From the navigation bar select Themes; Demography; ABS Demography Working Papers.

Source: *Australian Demographic Statistics* (Cat. no. 3101.0) (quarterly).

2

BIRTHS, DEATHS, MARRIAGES AND DIVORCES

	Registrations				Annual rate per 1,000 of mean estimated resident population				Infant deaths per 1,000 live births
	Births	Deaths (including infant deaths)	Marriages	Divorces	Births	Deaths	Marriages	Divorces	
1996-97	61 232	32 570	25 664	13 046	13.36	7.11	5.60	2.85	4.46
1997-98	60 143	32 423	25 955	11 916	13.00	7.01	5.61	2.58	4.86
1998-99	59 374	32 298	26 351	12 579	12.68	6.90	5.63	2.69	5.36
1999-2000 p	58 040	31 239	27 541	12 818	12.25	6.60	5.81	2.71	4.65
1998									
March qtr	14 577	7 169	8 530	2 663
June qtr	14 870	8 097	6 070	2 908
September qtr	15 197	8 984	3 912	3 188
December qtr	14 648	7 850	7 860	3 548
Year—1998	59 292	32 100	26 372	12 307	12.74	6.90	5.67	2.64	4.82
1999									
March qtr	14 939	7 259	8 657	2 738
June qtr	14 590	8 205	5 922	3 105
September qtr	p14 965	p8 747	4 211	3 461
December qtr	p14 554	p8 220	8 462	3 438
Year—1999	p59 048	p32 431	27 252	12 742	p12.54	p6.89	5.79	2.71	5.62
2000									
March qtr p	14 191	6 978	8 678	2 733
June qtr p	14 330	7 294	6 190	3 186
September qtr p	14 633	8 403	3 940	3 088

Source: *Australian Demographic Statistics* (Cat. no. 3101.0) (quarterly).

LABOUR FORCE STATUS OF THE CIVILIAN POPULATION AGED 15 YEARS AND OVER

	<i>Employed</i>		<i>Unemployed looking for work</i>			<i>Labour force</i>	<i>Not in labour force</i>	<i>Civilian population 15 years and over</i>	<i>Unemployment rate</i>	<i>Participation rate</i>
	<i>Full-time</i>	<i>Total</i>	<i>Full-time</i>	<i>Part-time</i>	<i>Total</i>					
	'000	'000	'000	'000	'000					
MALES										
1999										
December	1 097.1	1 262.9	74.8	20.1	95.0	1 357.9	495.6	1 853.5	7.0	73.3
2000										
January	1 077.8	1 232.6	78.0	13.5	91.4	1 324.0	531.6	1 855.6	6.9	71.4
February	1 102.6	1 254.6	71.9	18.8	90.7	1 345.3	512.6	1 857.8	6.7	72.4
March	1 084.4	1 249.8	71.7	21.1	92.8	1 342.5	517.5	1 860.0	6.9	72.2
April	1 084.6	1 255.0	69.1	21.0	90.1	1 345.1	517.1	1 862.2	6.7	72.2
May	1 091.6	1 254.7	75.4	17.0	92.4	1 347.2	517.1	1 864.3	6.9	72.3
June	1 088.9	1 259.4	66.3	16.9	83.2	1 342.6	523.9	1 866.5	6.2	71.9
July	1 114.2	1 282.7	61.0	14.9	75.9	1 358.5	510.5	1 869.0	5.6	72.7
August	1 092.4	1 265.9	66.1	18.3	84.5	1 350.4	521.2	1 871.5	6.3	72.2
September	1 115.9	1 285.8	71.0	17.7	88.7	1 374.4	499.7	1 874.1	6.5	73.3
October	1 123.6	1 292.6	70.6	12.6	83.3	1 375.9	501.2	1 877.1	6.1	73.3
November	1 131.4	1 297.1	68.4	14.7	83.1	1 380.3	499.8	1 880.1	6.0	73.4
December	1 150.6	1 316.8	68.3	20.1	88.4	1 405.2	477.9	1 883.1	6.3	74.6
2001										
January	1 122.1	1 288.5	72.6	18.5	91.1	1 379.6	506.4	1 886.0	6.6	73.2
February	1 133.6	1 310.8	76.7	16.6	93.2	1 404.0	484.8	1 888.9	6.6	74.3
FEMALES										
1999										
December	568.0	997.4	43.5	26.8	70.4	1 067.8	865.6	1 933.4	6.6	55.2
2000										
January	547.3	943.2	43.4	33.8	77.3	1 020.5	915.0	1 935.4	7.6	52.7
February	546.2	965.8	49.9	34.2	84.1	1 049.9	887.6	1 937.5	8.0	54.2
March	546.9	981.2	47.6	33.3	80.9	1 062.1	877.4	1 939.5	7.6	54.8
April	541.5	978.8	44.0	30.3	74.3	1 053.1	888.3	1 941.5	7.1	54.2
May	544.2	990.4	45.5	25.6	71.1	1 061.6	881.8	1 943.4	6.7	54.6
June	562.8	1 009.7	42.2	25.0	67.2	1 076.8	868.5	1 945.3	6.2	55.4
July	575.0	1 016.8	39.8	28.6	68.4	1 085.2	862.6	1 947.8	6.3	55.7
August	550.1	1 001.3	39.7	22.0	61.6	1 063.0	887.3	1 950.3	5.8	54.5
September	568.1	1 018.5	42.5	30.6	73.1	1 091.6	861.2	1 952.8	6.7	55.9
October	570.7	1 007.2	33.9	27.2	61.1	1 068.3	887.0	1 955.3	5.7	54.6
November	559.2	996.0	35.9	22.2	58.0	1 054.0	903.8	1 957.8	5.5	53.8
December	577.7	1 012.0	33.9	25.9	59.8	1 071.8	888.5	1 960.3	5.6	54.7
2001										
January	564.9	977.2	41.8	28.1	69.9	1 047.1	915.6	1 962.7	6.7	53.3
February	572.5	1 000.5	42.9	35.4	78.3	1 078.8	886.2	1 965.0	7.3	54.9
PERSONS										
1999										
December	1 665.1	2 260.3	118.3	47.0	165.3	2 425.7	1 361.2	3 786.8	6.8	64.1
2000										
January	1 625.1	2 175.8	121.4	47.3	168.7	2 344.5	1 446.6	3 791.1	7.2	61.8
February	1 648.7	2 220.4	121.8	53.0	174.8	2 395.2	1 400.1	3 795.3	7.3	63.1
March	1 631.3	2 230.9	119.3	54.4	173.7	2 404.6	1 394.9	3 799.6	7.2	63.3
April	1 626.1	2 233.8	113.1	51.3	164.4	2 398.2	1 405.4	3 803.6	6.9	63.1
May	1 635.8	2 245.2	120.9	42.7	163.6	2 408.8	1 399.0	3 807.7	6.8	63.3
June	1 651.7	2 269.0	108.5	41.9	150.4	2 419.4	1 392.4	3 811.8	6.2	63.5
July	1 689.2	2 299.5	100.8	43.5	144.3	2 443.8	1 373.1	3 816.8	5.9	64.0
August	1 642.4	2 267.2	105.8	40.3	146.1	2 413.3	1 408.5	3 821.8	6.1	63.1
September	1 684.0	2 304.2	113.5	48.3	161.8	2 466.0	1 360.8	3 826.8	6.6	64.4
October	1 694.3	2 299.8	104.6	39.8	144.4	2 444.2	1 388.2	3 832.4	5.9	63.8
November	1 690.6	2 293.1	104.3	36.8	141.1	2 434.2	1 403.6	3 837.9	5.8	63.4
December	1 728.3	2 328.7	102.3	46.0	148.2	2 477.0	1 366.4	3 843.4	6.0	64.4
2001										
January	1 687.0	2 265.7	114.4	46.6	161.0	2 426.7	1 422.0	3 848.7	6.6	63.1
February	1 706.2	2 311.3	119.6	51.9	171.5	2 482.8	1 371.1	3 853.9	6.9	64.4

Source: Labour Force, Victoria (Cat. no. 6202.2) (quarterly).

4

EMPLOYED PERSONS, BY INDUSTRY

	Nov 1999	Feb 2000	May 2000	Aug 2000	Nov 2000	Feb 2001
Industry division	'000	'000	'000	'000	'000	'000
MALES						
Agriculture, forestry and fishing	56.1	56.6	63.2	62.3	61.7	58.1
Mining	*3.6	5.1	7.4	5.4	5.5	4.8
Manufacturing	244.6	255.5	256.0	264.3	274.6	264.8
Electricity, gas and water supply	10.6	11.1	14.2	12.2	12.4	11.8
Construction	137.0	136.3	140.5	140.4	148.7	143.4
Wholesale trade	90.4	77.6	76.9	71.9	71.0	69.4
Retail trade	163.9	166.0	163.8	149.4	151.4	163.0
Accommodation, cafes and restaurants	41.2	46.2	46.0	41.8	51.7	50.2
Transport and storage	70.8	71.8	72.8	72.7	78.3	82.0
Communication services	29.6	35.7	38.2	37.8	38.1	39.2
Finance and insurance	38.9	42.7	38.7	42.2	39.4	44.8
Property and business services	148.7	144.5	143.6	157.8	165.7	165.0
Government administration and defence	35.2	34.3	29.3	31.6	34.0	40.4
Education	50.2	48.0	44.2	47.5	42.1	47.9
Health and community services	36.4	41.5	44.0	50.9	48.8	52.7
Cultural and recreational services	30.4	31.7	32.4	35.5	31.2	32.8
Personal and other services	40.8	50.0	43.6	42.2	42.6	40.3
Total	1 228.3	1 254.6	1 254.7	1 265.9	1 297.1	1 310.8
FEMALES						
Agriculture, forestry and fishing	29.1	25.8	29.2	30.1	30.8	33.9
Mining	*0.8	*1.4	*2.0	*2.0	*0.5	*0.6
Manufacturing	98.9	101.6	108.1	105.9	106.1	100.5
Electricity, gas and water supply	*2.4	*2.4	*2.8	*1.7	*2.8	*4.2
Construction	18.5	21.0	17.4	19.2	20.1	17.4
Wholesale trade	50.0	34.5	37.2	35.8	32.8	34.4
Retail trade	172.2	173.7	170.7	167.0	164.2	173.1
Accommodation, cafes and restaurants	48.9	48.3	56.9	54.7	59.6	53.7
Transport and storage	22.7	20.9	23.7	25.7	21.6	24.5
Communication services	17.3	19.5	17.5	18.2	17.4	16.9
Finance and insurance	45.7	49.4	48.1	48.5	46.4	44.3
Property and business services	114.5	116.8	118.4	129.4	122.1	116.7
Government administration and defence	40.7	34.2	34.8	39.3	45.2	46.1
Education	97.1	93.6	99.8	108.3	102.6	96.3
Health and community services	149.6	156.8	158.7	161.1	156.3	171.8
Cultural and recreational services	26.4	24.9	28.4	28.0	34.4	27.2
Personal and other services	40.4	41.0	36.9	26.4	33.1	38.9
Total	975.3	965.8	990.4	1 001.3	996.0	1 000.5
PERSONS						
Agriculture, forestry and fishing	85.2	82.4	92.4	92.3	92.5	92.0
Mining	*4.4	6.5	9.3	7.4	6.0	5.4
Manufacturing	343.5	357.1	364.1	370.1	380.7	365.4
Electricity, gas and water supply	13.0	13.5	17.0	13.9	15.2	16.0
Construction	155.6	157.3	157.9	159.7	168.7	160.9
Wholesale trade	140.4	112.1	114.1	107.6	103.9	103.8
Retail trade	336.0	339.7	334.5	316.4	315.6	336.1
Accommodation, cafes and restaurants	90.0	94.5	102.9	96.5	111.2	103.9
Transport and storage	93.5	92.7	96.5	98.5	99.9	106.5
Communication services	46.9	55.1	55.7	56.0	55.5	56.2
Finance and insurance	84.7	92.1	86.8	90.8	85.8	89.2
Property and business services	263.2	261.3	262.0	287.1	287.8	281.7
Government administration and defence	75.8	68.5	64.1	71.0	79.2	86.5
Education	147.3	141.6	144.0	155.8	144.8	144.3
Health and community services	186.0	198.3	202.7	212.0	205.0	224.4
Cultural and recreational services	56.8	56.6	60.8	63.5	65.6	60.0
Personal and other services	81.2	91.0	80.5	68.6	75.7	79.2
Total	2 203.7	2 220.4	2 245.2	2 267.2	2 293.1	2 311.3

Source: Labour Force, Victoria (Cat. no. 6202.2) (quarterly).

5

JOB VACANCIES

Month	Vacancies all persons '000	Sector		Job vacancy rate %
		Public '000	Private '000	
1999				
November	31.0	3.8	27.1	1.49
2000				
February	27.0	4.4	22.5	1.33
May	r26.2	6.7	r19.5	r1.28
August	r38.8	4.1	r34.7	r1.86
November	r35.2	5.0	r30.2	r1.69
2001				
February	29.5	3.7	25.7	1.41

Source: Job Vacancies, Australia (Cat. no. 6354.0) (quarterly).

6

INDUSTRIAL DISPUTES CAUSING STOPPAGE OF WORK

	Disputes		Employees involved		Working days lost				
	Beginning in period	Total	Beginning in period	Total	Manufacturing	Construction	Education, health, community services	Other industries	Total
	no.	no.	'000	'000	'000	'000	'000	'000	'000
1999									
June	23	25	10.9	11.3	13.1	1.2	0.1	1.2	15.6
July	16	23	10.3	11.0	11.5	6.6	1.1	0.5	19.6
August	29	34	75.9	76.5	42.7	8.5	10.6	6.1	67.9
September	13	14	14.0	14.1	19.2	4.6	—	0.2	24.0
October	21	23	8.2	8.4	1.6	5.1	0.7	0.6	8.0
November	17	21	17.8	17.9	5.2	19.6	—	0.6	25.4
December	29	34	5.6	6.5	6.2	1.7	—	0.5	8.4
2000									
January	19	24	2.7	2.9	3.9	2.4	—	0.8	7.1
February	18	24	7.8	8.5	6.4	12.8	—	1.5	20.7
March	17	21	4.9	8.1	4.9	10.4	2.0	2.4	19.7
April	8	15	1.7	4.2	4.0	4.0	0.5	1.4	9.9
May	22	26	8.7	8.9	1.9	7.0	—	0.5	9.4
June	19	23	6.2	6.6	6.8	0.3	—	2.4	9.5
July	22	27	7.3	9.9	1.0	3.6	2.0	0.5	7.1
August	24	35	7.0	8.0	11.1	1.4	0.3	0.8	13.6
September	21	30	10.4	11.9	8.0	2.0	0.7	0.6	11.3
October	16	24	9.6	11.1	7.9	8.7	—	0.2	16.8
November	20	26	2.0	2.5	5.3	0.9	—	0.8	7.0
December	14	18	2.2	2.6	3.0	0.4	0.2	0.4	4.0

Source: Industrial Disputes, Australia (Cat. no. 6321.0) (monthly).

7

AVERAGE WEEKLY EARNINGS OF EMPLOYEES

Month	Males			Females			Persons		
	Full-time adult ordinary time earnings	Full-time adult total earnings	All males total earnings	Full-time adult ordinary time earnings	Full-time adult total earnings	All females total earnings	Full-time adult ordinary time earnings	Full-time adult total earnings	All employees total earnings
	\$	\$	\$	\$	\$	\$	\$	\$	\$
1999									
August	772.30	821.00	705.70	685.20	700.80	488.40	740.80	777.60	601.60
November	780.80	838.80	726.90	695.40	712.40	488.80	750.10	793.40	610.80
2000									
February	797.80	843.70	732.30	696.70	710.00	492.60	761.30	795.40	616.20
May	799.10	850.10	739.60	706.00	722.60	504.80	765.90	804.70	626.30
August	813.10	861.40	741.80	724.10	740.40	513.80	781.60	818.60	632.30
November	808.70	857.00	737.80	716.20	732.70	509.80	776.20	813.30	627.60

Source: Average Weekly Earnings, States and Australia (Cat. no. 6302.0) (quarterly).

8

CONSUMER PRICE INDEX — MELBOURNE

Group	1999-2000	1999				2000	
		Sep qtr	Dec qtr	Mar qtr	Jun qtr	Sep qtr	Dec qtr
Food	128.7	127.8	128.6	128.3	130.1	131.6	132.8
Alcohol and tobacco	174.2	169.4	173.7	176.5	177.3	187.6	189.1
Clothing and footwear	107.1	107.5	107.1	106.9	106.9	116.2	115.4
Housing	90.7	88.8	90.4	91.7	91.7	97.8	98.3
Household furnishings, supplies, and services	114.7	114.3	114.4	114.3	115.7	117.9	117.1
Health	168.3	166.0	165.9	170.2	170.9	171.9	172.8
Transportation	127.9	125.9	125.2	129.2	131.2	134.5	135.6
Communication	97.6	97.5	97.1	97.2	98.5	105.4	104.6
Recreation	122.5	122.3	122.6	122.7	122.4	127.8	127.4
Education	175.5	171.5	171.5	179.4	179.4	179.7	179.8
Miscellaneous	146.1	139.7	143.3	147.8	153.4	159.3	159.4
All groups	124.1	122.7	123.5	124.7	125.6	130.4	130.8
Weighted average of eight capital cities — all groups	124.7	123.4	124.1	125.2	126.2	130.9	131.3

Base of each group: year 1989-90=100.0.

Source: Consumer Price Index, Australia (Cat. no. 6401.0) (quarterly).

Group	1999–2000			2000–2001			Weighted average of six state capital cities—Dec qtr 2000
	1997–98	1998–99	1999–2000	Jun qtr	Sept qtr	Dec qtr	
House building							
All groups	117.1	118.0	121.7	124.2	123.2	123.4	124.4
Other than house building							
Structural timber	115.6	116.2	118.5	123.2	126.2	123.8	136.7
Clay bricks	117.9	119.6	123.8	130.3	130.2	130.7	128.0
Ready mix concrete	111.4	112.9	110.8	110.1	108.6	109.5	100.6
Precast concrete products	115.7	123.9	130.9	135.8	138.2	142.2	132.4
Steel decking and cladding	109.4	108.0	109.3	113.0	113.2	112.7	118.5
Structural steel	104.9	104.9	101.3	101.0	101.2	99.8	111.9
Reinforcing steel bar, mesh, etc.	100.8	99.5	93.8	94.0	89.3	88.8	101.5
Aluminium windows	100.0	100.4	105.1	110.0	111.5	113.2	119.6
Fabricated steel products	120.0	124.7	125.6	126.1	124.1	125.2	118.5
Builders' hardware	119.6	122.7	127.6	133.6	135.2	134.2	133.3
Sand and aggregate	116.3	120.5	120.6	120.6	118.3	118.6	122.4
Carpet	102.6	100.1	98.9	98.7	93.5	94.4	96.2
Paint and other coatings	144.7	153.8	162.4	164.1	165.3	168.5	152.8
Non-ferrous pipes and fittings	113.0	111.2	116.6	118.2	120.8	127.7	140.4
All groups excluding electrical materials and mechanical services	111.0	112.3	113.0	114.7	114.1	115.2	116.6
All electrical materials	109.8	112.4	116.8	117.4	112.8	115.9	119.5
All mechanical services	114.9	118.2	120.6	121.6	115.4	117.2	115.2
All plumbing materials	122.8	122.8	127.7	130.6	128.4	131.0	131.6
All groups	111.4	113.2	114.4	116.0	114.0	115.3	116.3

Base of each index: year 1989–90 = 100.0.

Source: Price Index of Materials Used in Building Other Than House Building, Six State Capital Cities (Cat. no. 6407.0) (quarterly); Price Index of Materials Used in House Building, Six State Capital Cities (Cat. no. 6408.0) (quarterly).

10

LIVESTOCK SLAUGHTERINGS

	Cattle	Calves	Sheep	Lambs	Pigs
	'000	'000	'000	'000	'000
1997–1998	1 798.0	767.2	3 285.6	6 385.7	1 567.7
1998–1999	1 751.3	714.4	3 079.6	6 699.4	1 572.8
1999–2000	1 524.2	678.5	3 815.7	7 144.0	1 443.7
1999					
November	132.5	20.7	344.2	639.7	117.3
December	133.5	9.0	339.1	610.6	131.2
2000					
January	124.0	7.2	341.0	530.8	109.9
February	136.1	8.1	398.8	590.6	117.6
March	140.8	16.9	392.6	627.4	131.2
April	106.9	26.4	273.0	515.7	110.1
May	140.7	50.1	341.0	655.0	126.7
June	131.3	74.0	289.6	654.9	107.2
July	108.6	82.8	272.2	620.1	93.8
August	127.6	189.8	304.9	704.1	103.4
September	114.5	111.8	288.5	624.8	80.1
October	129.5	51.9	347.2	735.5	84.2
November	135.4	13.8	370.7	765.0	90.4
December	121.0	5.7	282.0	632.7	86.8
2001					
January	r134.4	6.0	r382.4	r675.9	84.7
February	136.3	5.2	406.4	654.8	83.6

Source: Unpublished data, Monthly Livestock Collection.

11

MEAT PRODUCTION

	<i>Meat (carcass weight)</i>				
	<i>Beef</i>	<i>Veal</i>	<i>Mutton</i>	<i>Lamb</i>	<i>Pigmeat</i>
	<i>tonnes</i>	<i>tonnes</i>	<i>tonnes</i>	<i>tonnes</i>	<i>tonnes</i>
1997-1998	389 087	15 578	63 470	119 972	112 504
1998-1999	398 815	14 225	61 647	128 379	114 581
1999-2000	351 371	13 371	76 713	140 205	106 691
1999					
November	31 629	425	7 038	12 338	8 796
December	31 062	208	6 897	11 709	9 403
2000					
January	29 030	177	6 749	10 608	8 029
February	31 668	198	7 647	11 693	8 499
March	32 739	364	7 598	12 316	9 595
April	24 523	533	5 268	10 200	7 866
May	32 077	970	6 634	13 158	9 689
June	29 732	1 397	5 797	12 955	8 119
July	25 181	1 534	5 791	12 311	7 077
August	29 353	3 638	6 555	14 079	7 875
September	26 829	2 268	5 989	12 304	6 047
October	31 100	991	7 414	14 161	6 174
November	32 630	281	7 827	14 895	6 735
December	27 544	131	5 931	12 171	6 758
2001					
January	r31 525	r138	r7 673	r13 000	r6 260
February	32 261	115	7 755	12 925	5 975

Source: Unpublished data, Monthly Livestock Collection.

12

NEW HOUSES AND OTHER RESIDENTIAL BUILDINGS, NUMBER OF DWELLING UNITS

<i>Period</i>	<i>New houses</i>				<i>New other residential buildings</i>			
	<i>Approved</i>	<i>Commenced</i>	<i>Under construction(a)</i>	<i>Completed</i>	<i>Approved</i>	<i>Commenced</i>	<i>Under construction(a)</i>	<i>Completed</i>
	<i>no.</i>	<i>no.</i>	<i>no.</i>	<i>no.</i>	<i>no.</i>	<i>no.</i>	<i>no.</i>	<i>no.</i>
1997-1998	27 937	26 004	12 368	22 425	7 412	7 598	5 148	6 542
1998-1999	29 227	29 165	14 455	26 926	8 861	8 307	6 198	7 029
1999-2000	36 174	34 716	17 861	31 231	12 009	11 725	9 715	8 105
1999								
June qtr	7 757	7 910	14 455	7 281	2 319	2 466	6 198	1 864
September qtr	9 293	8 155	15 667	6 939	3 184	3 354	7 844	1 702
December qtr	9 671	8 817	15 741	8 719	2 558	2 680	8 910	1 566
2000								
March qtr	9 663	8 975	18 128	6 569	3 883	2 856	9 509	2 220
June qtr	7 547	8 769	17 861	9 004	2 384	2 835	9 715	2 617
September qtr	5 457	6 372	15 975	8 258	2 431	2 456	9 640	2 461

(a) Under construction at the end of the period.

Source: Building Activity, Victoria (Cat. no. 8752.2) (quarterly); Building Approvals, Victoria (Cat. no. 8731.2) (quarterly).

	New dwelling units(a)						Alterations, additions and conversions(d)	Non-residential building(c)		Total all building
	Private sector		Public sector		Total(b)			Private sector	Total	
	no.	\$m	no.	\$m	no.	\$m		\$m	\$m	
MELBOURNE STATISTICAL DIVISION										
1997-1998	27 490	3 026.5	752	56.0	28 242	3 082.6	701.2	2 168.2	2 593.0	6 376.8
1998-1999	28 615	3 550.4	666	49.6	29 276	3 600.0	800.3	1 918.6	2 642.3	7 042.6
1999-2000	36 766	5 052.7	611	51.1	37 377	5 103.8	1 016.8	2 226.8	2 654.2	8 774.7
1999										
November	3 213	417.2	59	4.6	3 272	421.8	93.0	167.5	194.5	709.3
December	3 122	443.9	65	6.4	3 187	450.3	72.0	148.6	213.2	735.5
2000										
January	3 250	535.7	19	1.6	3 269	537.3	66.9	171.6	188.6	792.8
February	3 474	457.3	54	4.1	3 528	461.4	87.5	208.2	262.5	811.5
March	3 809	533.3	9	0.8	3 818	534.1	84.9	153.0	171.1	790.1
April	2 548	336.3	30	2.3	2 578	338.6	97.8	232.1	289.9	726.3
May	2 524	357.7	40	3.5	2 564	361.2	83.7	158.1	173.4	618.3
June	2 434	344.8	43	3.3	2 477	348.1	93.3	283.3	305.5	747.0
July	2 319	395.7	36	3.0	2 355	398.7	114.9	284.8	520.5	1 034.1
August	1 948	291.2	32	3.1	1 980	294.3	88.8	193.0	227.8	610.9
September	r1 909	r272.0	32	3.3	r1 941	r275.2	r57.1	r179.3	r216.2	r548.6
October	1 380	207.8	68	6.7	1 448	214.5	87.3	147.0	178.3	480.1
November	2 274	355.3	15	1.1	2 289	356.4	82.8	194.8	237.9	677.1
December	2 376	393.5	11	1.7	2 387	395.2	71.2	239.5	259.9	726.2
2001										
January	1 983	310.2	51	4.9	2 034	315.1	59.0	157.9	225.7	599.9
February	2 516	364.9	25	3.3	2 541	368.2	73.9	183.1	232.7	674.8
TOTAL VICTORIA										
1997-1998	34 178	3 811.3	1 171	88.6	35 349	3 899.8	858.5	2 476.9	3 064.5	7 822.8
1998-1999	37 194	4 482.6	894	67.2	38 088	4 549.9	951.2	2 262.5	3 125.7	8 626.8
1999-2000	47 396	6 312.6	787	65.1	48 183	6 377.7	1 208.4	2 622.1	3 215.0	10 801.1
1999										
November	4 161	529.3	68	5.4	4 229	534.7	107.3	198.0	235.7	877.8
December	4 047	555.1	67	6.6	4 114	561.7	88.1	186.6	266.2	916.0
2000										
January	4 046	630.6	27	2.3	4 073	633.0	80.3	196.5	235.1	948.3
February	4 597	592.8	73	5.9	4 670	598.7	101.2	235.1	325.5	1 025.5
March	4 791	653.1	12	1.1	4 803	654.2	103.3	185.8	215.8	973.4
April	3 334	433.0	39	3.0	3 373	436.0	112.8	257.2	327.3	876.1
May	3 335	456.0	49	4.2	3 384	460.3	103.5	213.2	240.2	804.0
June	3 126	425.9	49	3.8	3 175	429.7	111.7	324.3	350.9	892.2
July	2 851	462.1	38	3.1	2 889	465.2	125.7	310.3	560.1	1 151.0
August	2 512	364.7	59	5.3	2 571	370.0	104.9	219.0	267.7	742.7
September	r2 488	r341.3	32	3.3	r2 520	r344.6	r73.0	r226.9	r292.9	r710.5
October	1 963	284.0	71	7.3	2 034	291.3	108.0	185.1	225.3	624.6
November	2 937	437.5	15	1.1	2 952	438.5	97.8	226.5	290.4	826.7
December	2 939	467.5	16	2.5	2 955	470.0	87.4	279.4	311.0	868.4
2001										
January	2 514	381.4	58	5.9	2 572	387.3	73.2	181.5	266.8	727.3
February	3 158	451.3	28	4.0	3 186	455.3	89.4	202.7	257.8	802.6

(a) Valued at \$10,000 and over.

(b) Excludes dwelling units created as a result of conversions or construction of non-residential buildings.

(c) Valued at \$50,000 and over.

(d) Includes alterations and additions creating dwellings, alterations and additions not creating dwellings and conversions.

Source: Building Approvals, Victoria (Cat. no. 8731.2) (quarterly).

	Residential buildings		Non-residential buildings						
	New	Alterations and additions	Shops	Factories	Offices	Education	Health	Other	Total
	\$m	\$m	\$m	\$m	\$m	\$m	\$m	\$m	\$m
COMMENCED									
1997-1998	3 850.5	891.1	598.5	241.8	428.6	270.9	250.2	1 399.8	7 931.4
1998-1999	4 496.3	987.2	444.1	263.6	428.1	485.0	239.9	1 186.0	8 530.2
1999-2000	6 361.5	1 295.6	557.3	386.6	484.5	592.5	316.4	925.9	10 920.3
1999									
June qtr	1 257.1	250.4	119.8	64.3	91.1	78.7	76.9	341.1	2 279.4
September qtr	1 540.9	305.2	119.0	69.5	83.6	86.0	71.7	242.1	2 518.0
December qtr	1 544.5	278.8	110.4	65.8	176.6	83.2	75.9	188.1	2 523.2
2000									
March qtr	1 652.2	327.1	119.9	90.0	115.1	124.2	103.4	251.7	2 783.6
June qtr	1 623.9	384.6	208.0	161.3	109.2	299.0	65.5	244.0	3 095.5
September qtr	1 316.8	258.1	168.7	57.9	109.6	83.5	44.7	324.4	2 363.8
UNDER CONSTRUCTION AT END OF PERIOD									
1997-1998	2 274.1	412.4	406.6	141.9	241.6	320.2	279.8	1 466.0	5 542.6
1998-1999	2 745.1	451.3	420.8	120.9	190.2	485.8	243.5	1 611.2	6 268.8
1999-2000	4 199.8	595.7	473.3	224.7	217.6	711.1	291.8	1 028.7	7 742.4
1999									
June qtr	2 745.1	451.3	420.8	120.9	190.2	485.8	243.5	1 611.2	6 268.8
September qtr	3 229.8	531.2	440.2	117.8	129.6	527.3	237.1	1 503.3	6 716.2
December qtr	3 493.2	561.2	305.7	110.0	206.0	491.7	219.6	1 433.6	6 821.0
2000									
March qtr	4 063.0	654.0	367.9	136.6	229.7	504.9	283.1	1 104.6	7 343.8
June qtr	4 199.8	595.7	473.3	224.7	217.6	711.1	291.8	1 028.7	7 742.4
September qtr	4 104.5	602.6	617.1	189.2	226.5	572.0	260.6	1 058.2	7 630.8
COMPLETED									
1997-1998	3 213.6	866.6	474.7	338.4	449.4	283.2	208.2	1 738.4	7 572.4
1998-1999	4 068.1	992.4	487.3	294.3	524.9	328.5	305.1	1 110.3	8 111.0
1999-2000	5 049.6	1 193.5	573.2	292.4	462.3	409.0	284.1	1 606.9	9 871.0
1999									
June qtr	1 134.9	280.2	118.0	83.1	121.3	118.8	93.2	210.2	2 159.7
September qtr	1 075.3	235.3	116.3	76.1	147.0	50.2	81.2	375.3	2 156.7
December qtr	1 319.3	260.9	277.4	75.1	101.6	124.1	94.0	265.3	2 517.6
2000									
March qtr	1 114.1	247.4	69.9	65.5	91.9	119.6	40.6	605.8	2 354.8
June qtr	1 541.0	449.9	109.5	75.7	121.8	115.1	68.3	360.5	2 841.8
September qtr	1 493.5	267.6	96.8	91.4	99.4	210.5	73.9	292.3	2 625.2

Source: Building Activity, Victoria (Cat. no. 8752.2) (quarterly).

15

PRIVATE NEW CAPITAL EXPENDITURE, BY SELECTED INDUSTRIES AND TYPE OF ASSET

Period	Selected industries				Type of asset	
	Mining	Manufacturing	Other selected industries	Total	New buildings and structures	Equipment, plant and machinery
	\$m	\$m	\$m	\$m	\$m	\$m
ACTUAL						
1998-1999	1 234	2 954	7 180	11 368	3 211	8 157
1999-2000	615	3 363	6 999	10 977	2 761	8 217
1999						
September qtr	205	918	1 709	2 832	799	2 033
December qtr	194	928	1 849	2 970	711	2 260
2000						
March qtr	66	721	1 622	2 409	595	1 814
June qtr	151	796	1 819	2 766	656	2 110
September qtr	77	r965	r1 623	r2 665	r566	r2 099
December qtr	108	761	1 731	2 600	563	2 036
EXPECTED						
2000-2001	r501	r3 226	r6 593	r10 320	r2 148	r8 172
2001-2002	639	2 610	5 159	8 408	1 361	7 047

Source: State Estimates of Private New Capital Expenditure (Cat. no. 5646.0) (quarterly).

16

COMMERCIAL FINANCE COMMITMENTS

	Fixed loan facilities						Revolving credit facilities	Total commitments
	Construction	Purchase of real property	Purchase of plant and equipment	Wholesale	Other	Total		
	\$m	\$m	\$m	\$m	\$m	\$m		
1999								
November	235.6	633.8	214.3	65.0	502.9	1 651.7	1 288.5	2 940.2
December	155.9	689.9	254.2	77.7	572.1	1 749.9	1 853.3	3 603.2
2000								
January	194.5	527.0	154.1	60.5	406.0	1 342.1	1 153.7	2 495.9
February	118.6	657.5	201.3	57.5	523.4	1 558.3	1 523.2	3 081.5
March	123.0	672.2	211.1	47.1	652.9	1 706.3	2 013.8	3 720.1
April	137.3	536.1	185.9	161.6	506.5	1 527.5	1 396.7	2 924.2
May	149.4	706.6	217.7	45.0	549.6	1 668.2	2 580.0	4 248.2
June	186.8	775.7	351.5	86.3	1 979.7	3 380.0	1 642.0	5 021.9
July	234.7	563.5	178.6	93.8	720.1	1 790.8	1 486.8	3 277.5
August	176.5	549.2	225.1	77.3	809.9	1 838.0	1 100.3	2 938.3
September	155.5	509.4	225.7	71.0	896.4	1 858.1	1 947.3	3 805.4
October	160.4	523.3	179.2	66.1	989.0	1 918.0	1 203.5	3 121.5
November	181.7	581.8	204.1	105.3	497.9	1 570.8	1 464.4	3 035.2
December	134.6	527.8	223.4	93.7	651.9	1 631.3	2 353.6	3 984.9
2001								
January	115.7	555.7	172.6	92.8	491.3	1 428.1	1 591.2	3 019.3

Source: AusStats (Cat. no. 1405.0.55.001).

17

SECURED HOUSING FINANCE COMMITMENTS, DWELLING UNITS

Month	Original series		Seasonally adjusted		Trend estimates	
	no.	\$m	no.	\$m	no.	\$m
1999						
November	12 231	1 639	11 834	1 575	11 599	1 550
December	11 652	1 592	11 566	1 550	11 522	1 551
2000						
January	8 962	1 242	11 309	1 524	11 279	1 527
February	11 184	1 498	11 005	1 510	10 913	1 479
March	11 558	1 554	10 471	1 390	10 522	1 421
April	8 681	1 172	9 348	1 307	10 194	r1 364
May	12 592	1 622	11 361	1 458	r9 933	r1 313
June	9 352	1 250	8 690	1 152	r9 789	r1 271
July	9 305	1 165	9 719	1 214	r9 775	r1 245
August	10 911	1 367	10 482	1 335	r9 889	r1 241
September	9 368	1 166	9 634	1 203	r10 078	r1 257
October	r10 210	r1 252	r10 076	r1 234	r10 286	r1 286
November	r11 282	r1 388	r10 888	r1 335	r10 491	r1 320
December	r10 153	r1 330	r10 937	r1 410	r10 683	r1 356
2001						
January	9 104	1 231	10 472	1 388	10 749	1 382

Source: *Housing Finance for Owner Occupation, Australia (Cat. no. 5609.0) (monthly).*

18

RETAIL TURNOVER, BY INDUSTRY (EXCLUDING MOTOR VEHICLES, PARTS, PETROL, ETC.)

	Food retailing	Department stores	Clothing and soft good retailing	Household good retailing	Recreational good retailing	Other retailing	Hospitality and services	Total
	\$m	\$m	\$m	\$m	\$m	\$m	\$m	\$m
1999								
December	1 463.8	528.1	339.8	498.2	233.8	439.8	526.4	4 030.0
2000								
January	1 219.9	228.0	221.5	358.1	138.2	267.6	412.3	2 845.5
February	1 155.2	195.9	181.7	326.1	120.7	268.1	406.6	2 654.2
March	1 244.7	224.2	217.4	342.8	132.1	292.6	451.7	2 905.5
April	1 163.1	260.6	224.2	309.6	117.4	291.9	388.4	2 755.3
May	1 180.1	265.3	248.2	349.8	118.9	305.2	393.8	2 861.3
June	1 173.5	298.6	279.7	416.3	124.1	313.6	399.9	3 005.8
July	1 211.9	202.4	173.1	316.4	115.5	294.2	394.1	2 707.6
August	1 236.0	234.6	189.4	340.4	124.0	315.0	414.1	2 853.6
September	1 216.2	245.9	193.9	341.3	130.7	311.2	408.4	2 847.6
October	1 253.7	264.7	202.4	353.7	124.5	354.3	418.4	2 971.6
November	1 296.2	302.9	240.8	385.8	136.9	375.1	425.2	3 163.0
December	1 515.4	543.4	350.2	481.6	207.5	504.7	480.6	4 083.3
2001								
January	1 309.7	r240.0	212.4	366.5	141.2	r312.4	428.0	r3 010.1
February	1 220.6	202.0	181.3	336.1	115.0	312.0	407.1	2 774.1

Source: *Retail Trade, Australia (Cat. no. 8501.0) (monthly).*

	1999-2000		Eight months ending February 2001	
	Imports	Exports	Imports	Exports
	\$m	\$m	\$m	\$m
0 Food and live animals chiefly for food(b)(c)	1 357	4 426	951	3 711
1 Beverages and tobacco(b)(c)	141	187	139	146
2 Crude materials, inedible (except fuels)(b)(c)	625	1 580	472	1 361
3 Mineral fuels, lubricants, and related materials(c)	1 764	1 221	1 522	994
4 Animal and vegetable oils, fats and waxes(b)(c)	93	113	66	69
5 Chemicals and related products, n.e.c.(b)(c)	3 352	1 024	2 521	811
6 Manufacturing goods classified chiefly by material(b)(c)	4 648	2 681	3 270	1 876
7 Machinery and transport equipment(b)(c)	14 768	3 963	10 395	2 600
8 Miscellaneous manufactured articles(b)(c)	5 835	1 162	4 317	923
9 Commodities and transactions of merchandise trade, n.e.c.(d)	1 133	2 677	919	2 121
Total	33 717	19 034	24 572	14 613

(a) Any discrepancies between sums of the component items and totals are due to rounding.

(b) Excludes export commodities subject to a confidentiality restriction. These are included in Division 9.

(c) Excludes imports commodities subject to a confidentiality restriction. These are included in Division 9.

(d) Includes export and import commodities subject to a confidentiality restriction.

Source: *International Merchandise Trade: Fasttracks Database November 2000.*

Country	1998-99		1999-2000		Eight months ending February 2001	
	Imports	Exports	Imports	Exports	Imports	Exports
	\$m	\$m	\$m	\$m	\$m	\$m
Belgium-Luxembourg	239	102	258	110	188	116
Brazil	118	48	105	46	86	47
Canada	392	125	445	135	282	125
China	2 537	669	3 029	1 124	2 770	879
Fiji	180	242	194	286	96	242
Finland	188	9	187	9	157	6
France	619	131	622	136	492	104
Germany	2 341	407	2 402	397	1 647	318
Hong Kong (SAR of China)	431	900	403	945	295	738
India	261	192	262	193	202	138
Indonesia	1 078	226	893	295	654	243
Italy	1 038	288	1 036	332	689	301
Japan	4 133	1 676	4 416	1 860	3 246	1 489
Korea, Republic of	847	862	870	1 236	738	960
Malaysia	873	431	1 118	514	713	344
Mexico	103	90	111	74	95	114
Netherlands	292	109	318	105	202	98
New Zealand	1 333	1 635	1 491	2 297	995	1 258
Pakistan	87	43	85	56	84	37
Papua New Guinea	64	188	67	139	17	91
Philippines	157	387	163	385	123	340
Saudi Arabia	107	511	221	704	188	673
Singapore	510	1 080	632	1 475	415	1 083
South Africa	125	217	166	229	138	142
Sweden	598	25	607	29	389	17
Switzerland	335	34	319	40	213	25
Taiwan	905	920	922	835	680	586
Thailand	523	343	673	439	561	281
United Kingdom	1 839	1 169	1 793	694	1 190	360
United States of America	6 891	1 469	7 701	1 630	4 922	1 332
Other and unknown	1 870	1 956	2 208	2 285	2 105	2 126
Total	31 014	16 484	33 717	19 034	24 572	14 613

(a) The list of countries in this table reflects the volume of trade with Victoria. Information about Victoria's trade with other countries is available on request.

Source: *International Merchandise Trade: Fasttraccs Database November 2000.*

21

VALUE OF OVERSEAS TRADE — VICTORIA AND AUSTRALIA

Period	Victoria				Australia
	Imports	Exports	Imports	Exports	Excess of exports
	\$m	\$m	\$m	(including re-exports) \$m	\$m
1998–1999	31 014	16 484	97 611	85 991	-11 620
1999–2000	33 717	19 034	110 078	97 286	-12 792
1999					
December	2 653	1 716	8 922	8 375	-547
2000					
January	2 556	1 219	8 110	6 831	-1 279
February	2 702	1 679	8 653	8 233	-420
March	2 979	1 840	9 648	8 812	-836
April	2 490	1 602	8 004	8 271	267
May	2 998	1 705	10 370	9 219	-1 151
June	2 976	1 564	10 436	9 193	-1 243
July	2 908	1 640	9 755	r9 367	r-388
August	3 319	1 763	10 716	r9 374	r-1 342
September	3 041	1 852	9 852	r9 788	r-64
October	3 442	r2 205	11 154	r10 561	r-593
November	3 443	r1 946	11 006	r10 436	r-570
December	r2 820	r1 834	r9 250	r10 293	r1 043
2001					
January	r2 882	r1 483	r9 233	r8 317	r-916
February	2 717	1 889	8 331	9 212	881

Source: *International Merchandise Trade: Fasttraccs Database November 2000.*

22

TOURIST ACCOMMODATION

Quarter ended	Hotels, motels, guest houses and serviced apartments(a)						
	Establishments	Guest rooms	Bed spaces	Room nights occupied	Room occupancy rate	Persons employed	Takings from accommodation
	no.	no.	no.	'000	%	no.	\$'000
1999							
June	698	30 766	85 247	1 545.6	55.4	21 725	170 130
September	698	30 934	85 483	1 589.5	56.0	21 780	184 105
December	705	31 317	86 058	1 672.7	58.1	21 633	191 644
2000							
March	707	31 332	86 134	1 773.4	62.3	21 498	213 272
June	705	31 384	86 372	1 628.9	57.1	21 586	185 332
September	703	31 158	85 719	1 608.7	56.2	21 784	202 914
December	701	31 155	85 238	1 698.9	59.4	21 700	212 463

(a) Comprising establishments with 15 or more rooms or units.

Source: *Tourist Accommodation, Australia (Cat. no. 8635.0) (quarterly).*

FOR MORE INFORMATION...

- INTERNET* **www.abs.gov.au** the ABS web site is the best place to start for access to summary data from our latest publications, information about the ABS, advice about upcoming releases, our catalogue, and Australia Now—a statistical profile.
- LIBRARY* A range of ABS publications is available from public and tertiary libraries Australia-wide. Contact your nearest library to determine whether it has the ABS statistics you require, or visit our web site for a list of libraries.
- CPI INFOLINE* For current and historical Consumer Price Index data, call 1902 981 074 (call cost 77c per minute).
- DIAL-A-STATISTIC* For the latest figures for National Accounts, Balance of Payments, Labour Force, Average Weekly Earnings, Estimated Resident Population and the Consumer Price Index call 1900 986 400 (call cost 77c per minute).

INFORMATION SERVICE

Data which have been published and can be provided within five minutes are free of charge. Our information consultants can also help you to access the full range of ABS information—ABS user-pays services can be tailored to your needs, time frame and budget. Publications may be purchased. Specialists are on hand to help you with analytical or methodological advice.

- PHONE* **1300 135 070**
- EMAIL* **client.services@abs.gov.au**
- FAX* 1300 135 211
- POST* Client Services, ABS, GPO Box 796, Sydney 1041

WHY NOT SUBSCRIBE?

ABS subscription services provide regular, convenient and prompt deliveries of ABS publications and products as they are released. Email delivery of monthly and quarterly publications is available.

- PHONE* 1300 366 323
- EMAIL* subscriptions@abs.gov.au
- FAX* 03 9615 7848
- POST* Subscription Services, ABS, GPO Box 2796Y, Melbourne 3001



2130320003011
ISSN 0158-202X

RRP \$18.00